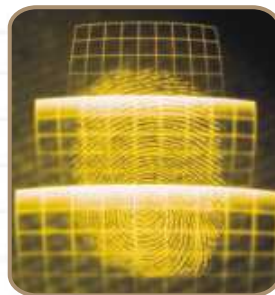
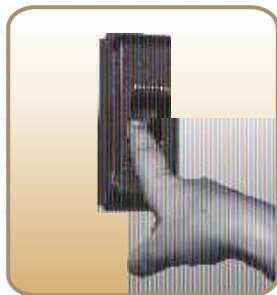
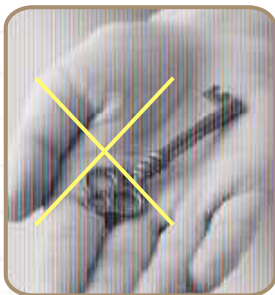




## BioStamp



[www.spectra-vision.com](http://www.spectra-vision.com)



## Affordable Biometric Security

Unit No. 422 / 423, Building No. 9, Jogani Industrial Estate, Off. V. N. Purav Marg, Chunabhatti (E), Mumbai 22  
Ph: 022-24055001 / 2 Telefax: 022- 24055006 (M) 09833545257  
Email: [piyush@conceptequipments.com](mailto:piyush@conceptequipments.com)

Regd Off: 11/13, Botawala Building, 2nd Floor, Rm. No. 5, Horniman Circle, Fort, Mumbai 400023

FingerXs



*INSTAID*



ezCANTEEN



**BioStamp**



Paypoint

## Features

- ⊗ Affordable solution for biometric access security
- ⊗ Most accurate and reliable fingerprint scanner
- ⊗ Elegant design with compact dimensions, suitable for installations on a door frame
- ⊗ Industry standard Weigand interface for easy interface to any access controller

## Template Manager

- ⊗ BioStamp comes with fingerprint database management software for easy enrollment and transfer of templates
- ⊗ Auto scan of all the units connected over network
- ⊗ Uses MS Access database to store the centralized information of all the registered fingerprints
- ⊗ The software supports both RS485 and Wireless interface for template transfers
- ⊗ The templates can either be registered on **BioStamp** directly or through a USB scanner and can later on be transferred to **BioStamp** unit.
- ⊗ Configuration of various fingerprint sensor parameters like security level, image quality etc
- ⊗ Configure Weigand parameters like no of bits, pulse interval, pulse width etc
- ⊗ API for third party access management software

## Accessories



Enrollment  
Sensor

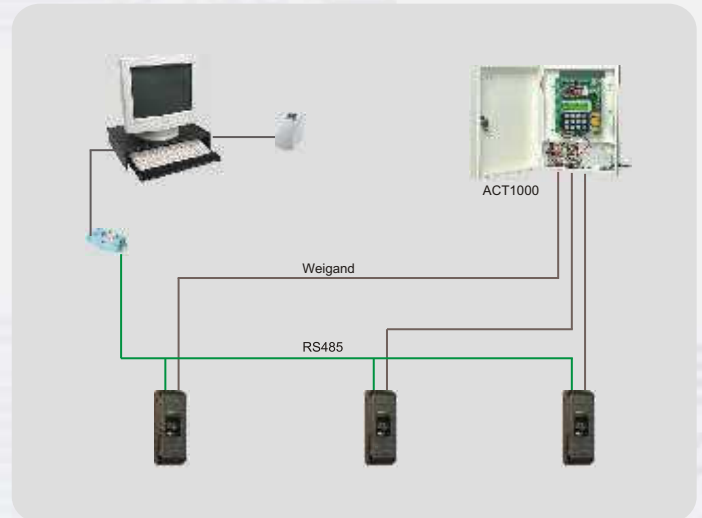


USB Wireless  
Adaptor



RS232 Interface  
Converter

## Configuration



## Specifications :

- ⊗ Optical Fingerprint scanner with 500 dpi resolution
- ⊗ Registration Time <1 Sec , 1:1 Match < 1 sec, 1:N match <1 sec for 1000 templates
- ⊗ Equal Error Rate < 0.1%
- ⊗ Capacity to store 1900 fingerprint templates (950 users)
- ⊗ Built in RFID reader for different authentication modes like only Finger , only Card, Card + Finger
- ⊗ Card reader options – HID iClass, Mifare, HID Prox & EM reader
- ⊗ Configurable Weigand output, connects seamlessly to most access controllers
- ⊗ Support of template on card mode with contactless smart card
- ⊗ Support of Command cards for easy user management
- ⊗ Multi color LED indication for successful match
- ⊗ Programmable Buzzer & LED control from controller
- ⊗ RS485 / Wireless interface for fingerprint registration
- ⊗ Operating voltage 12VDC
- ⊗ Dimensions = 5.3 cm (L) x 15.5 cm (H) x 3.8 cm(D)

mifare



Unit No. 422 / 423, Building No. 9, Jogani Industrial Estate, Off. V. N. Purav Marg, Chunabhatti (E), Mumbai 22  
Ph: 022-24055001 / 2 Telefax: 022- 24055006 (M) 09833545257  
Email: piyush@conceptequipments.com

Regd Off: 11/13, Botawala Building, 2nd Floor, Rm. No. 5, Horniman Circle, Fort, Mumbai 400023